

# Spirit Alive

SPECIAL EDITION OCTOBER 2010

The Newsletter for Residents, Staff,  
Families, and Friends of St. Patrick's

St. Patrick's Home of Ottawa Inc.

## Redevelopment is Launched



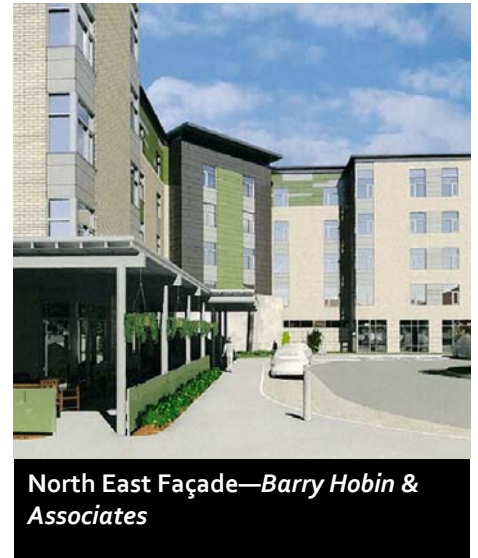
Don Burke, Chair of  
St. Patrick's Home Board of  
Directors

It is my honour and privilege as Chair of the Board of Directors of St. Patrick's Home of Ottawa to introduce you to the launch of our long awaited redevelopment project.

A sincere *Thank You* must first be extended to all who have worked to make this project a reality and to all those who will continue to be called upon to contribute their support.

We have transformed the dream of a new Home into today's state of readiness based on the solid common sense and intuition of our founders, the Grey Sisters of the Immaculate Conception. This common sense has always been rich with compassion, courage and a belief in the goodness of humanity. The legacy of their work is demonstrated in the coherence they have maintained between what they have sensed, observed, reflected upon, and what they have actively practiced for over 145 remarkable years.

Today's Board has been challenged with significant changes in health care, a change not only in the way we think, but in how we work internally and in how we respond to our residents and their families, their wishes and needs. Today's



North East Façade—Barry Hobin & Associates

consumer is informed and rightfully expects an enhanced level of sophistication to meet current and anticipate future challenges. Our Board members, in their commitment to sustain our legacy, have responded to these expectations with an unwavering respect for the Mission, Vision and Core Values of St. Patrick's Home. This commitment has in return gifted to all of us a sense of great satisfaction and an improved understanding of an 'age friendly' society.

(Continued on page 2)

**Our Core Values**  
Sacredness of Life  
Spirituality Hospitality  
Justice  
Growth and Vision

## Keeping the Spirit Alive...

We have not reached this stage of our redevelopment without the help of many. Particular thanks is owed to the support of governmental decision makers, generous donors, and our enthusiastic founders and sponsors. As well, careful planning and management by our Foundation, and a dedicated Campaign Steering Committee infused with the energy of its Chair, Larry Kelly, has helped straighten an otherwise long and winding road.

My colleagues and I are proud to be standing at this crossroad. We are even more excited by the opportunities the future holds to realize a "continuum of care" concept at St. Patrick's for the benefit of our community.

Join us in the transformation to a new of St. Patrick's Home of Ottawa, built on the tradition of caring and *"Keeping the Spirit Alive."*

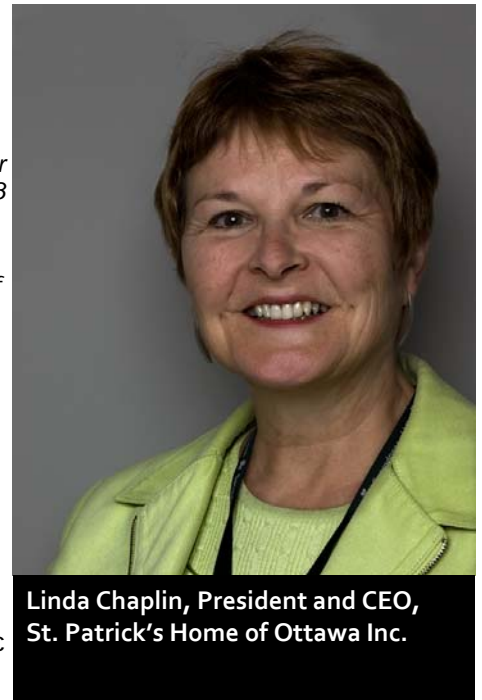
*Donald P. Burke*  
Chair Board of  
Directors  
St. Patrick's Home of Ottawa

*"Longevity is a success. It is something human beings have wanted from the year dot! The fact that we are getting it should not be seen as a problem. It should be seen as an achievement."*

*M. Desai – International Year of Older Persons October 1998*

The launch of our new long term care home project follows years of investment of human energy in planning, research and implementation of best practice and technology as well as consultation with consumers, clinical, architectural and other experts and of course, with our own staff. The primary goal of St. Patrick's Home has always been to host a living environment built on the rich history of Catholic tradition while assuring a future-focused organization ready for opportunities and responsive to change. Government's 1997 call for new long term care beds in Ottawa, followed almost immediately by the province's renewal strategy for existing long term care homes, created the perfect opportunity for St. Patrick's Home to achieve and sustain our desired future.

It must be said that a new building is not an end in itself. It is about delivering better services and modernizing care delivery, improving the services we provide and positively impacting the way consumers interact with us as providers. It is also about incorporating partnerships with others to develop new solutions in the best interest of our stakeholders.



Linda Chaplin, President and CEO, St. Patrick's Home of Ottawa Inc.



Approach— Barry Hobin & Associates

Ageing in the 21<sup>st</sup> century is a worldwide phenomenon that profoundly touches every aspect of life. By 2050, there will be more older people than children in the population for the first time in human history. The majority of our residents are in the

## Building on Our Legacy...Since 1865

*(Continued from page 2)*

80+ age range, the fastest growing population segment in developed nations. By 2050, this population group is expected to be almost six times as large as today. In 2050, world-wide, the number of centenarians (those over 100 years) is projected to be sixteen times as large as today. As a society, we need to educate ourselves and prepare for this important shift and the challenges we will face.

Whether our seniors are served in facility-based care or other settings, supportive and enabling living environments are essential to quality of life while managing age-related physical, cognitive and social changes. Managing the aging phenomenon requires fundamental rethinking of how services are offered. Residents must be enabled to access and receive services that match their needs while, as an organization, we continue to meet and exceed required standards and remain accountable and fiscally responsible for public dollars. We embrace and welcome that challenge.

Living well in later life is a deserved expectation. Our new Home, when combined with the strengths and compassion of our founders, staff, physicians, volunteers and Board leaders, will maintain our well-deserved reputation and will assuredly ... *Keep the Spirit Alive.*

*Linda Chaplin  
President & CEO*

What an exciting time for St. Pats! It is a privilege to play a part in the plans to build a new Home for our community's seniors.

I agreed to be the Chairman for the ambitious Campaign to raise 10 million dollars towards the building of the new Home for a few key reasons. Perhaps most directly, I have been fortunate that family members have been Residents at St. Pat's through the years and I have always been impressed with how warm, caring and devoted the staff, Sisters and volunteers are. Members of my family have been treated with compassion and they were able to live with dignity and joy and within a spiritually uplifting environment. The gratitude I feel for this is echoed by many families in Ottawa.

The Mission and Values are alive at St. Pat's and the special spirit of the Home really does create a beautiful environment for the Residents, staff, volunteers and Sisters. I have seen and felt this special St. Pat's Spirit first hand.

What I have also seen first hand is the critical need for a new Home for this community's seniors. Every day, stories in the newspaper detail how there is truly a "healthcare crisis" with a shortage of appropriate local options for our seniors. This deficiency negatively impacts all levels of our health care system and has been referred to as Ottawa's #1 healthcare issue.



Larry Kelly, Campaign Chairman

Our community's seniors deserve better.

It is clearly important for the community to come together to find solutions. Building a new St. Pat's is an important step in that process.

The work that has been accomplished by the Home's staff and Board team in creating a plan for a new Home that will address the complex care issues of today's, and tomorrow's, seniors is to be applauded! The new St. Pat's will build upon the Home's 145 year legacy of compassionate care while also providing a dignified, responsive and appropriate Home to meet Resident needs.

We will all be very proud of our new St. Pat's.

*(Continued on page 4)*

A dedicated core team of community leaders has been assembled to serve on our Campaign Cabinet. These Champions and Ambassadors of the Home are charged with bringing the St. Pat's spirit out into the community to inspire investment in our exciting project. In collaboration with the Board of Directors for the Foundation and the Home, our work will be to provide opportunities for the community to demonstrate their support of St. Pat's.

Much has been accomplished already in our ambitious goal to raise 10 million dollars. We have already received tremendous support and investment from St. Pat's

"family" members and key partners. It is inspiring work!

We look forward to sharing the developments in our Campaign with you and we also look forward to inviting you to participate and invest in the future St. Pat's.

If you have questions about the Campaign and would like to learn more about our plans, kindly contact Jennifer Conley, The Foundation's Executive Director & Campaign Director at 613.260.2739 or via email [jconley@magma.ca](mailto:jconley@magma.ca).



**Larry Kelly**  
**Campaign Chairman**

## Campaign Cabinet

- |                     |   |
|---------------------|---|
| Chairman            | Larry Kelly   |
| Executive Committee | Don Burke<br>Jan Kaminski Jr<br>Pat Kelly<br>Paul McCarney<br>Brian Murray  |
| Members             | Thom Bennett<br>Jim Chadwick<br>Phil Downey<br>David Guilfoyle<br>Charlie Logue<br>Peter Pleckaitis<br>Ken Tammadge<br>Peter Vice |



**Courtyard—Barry Hobin & Associates**

**St. Patrick's Home of Ottawa Inc.**  
 2865 Riverside Drive  
 Ottawa Ontario K1V 8N5  
 Tel: (613)731-4660 or (613)731-0094 (direct line)  
 Fax: (613)731-4056      Web: [www.stpats.ca](http://www.stpats.ca)